

Existing Tree Data:

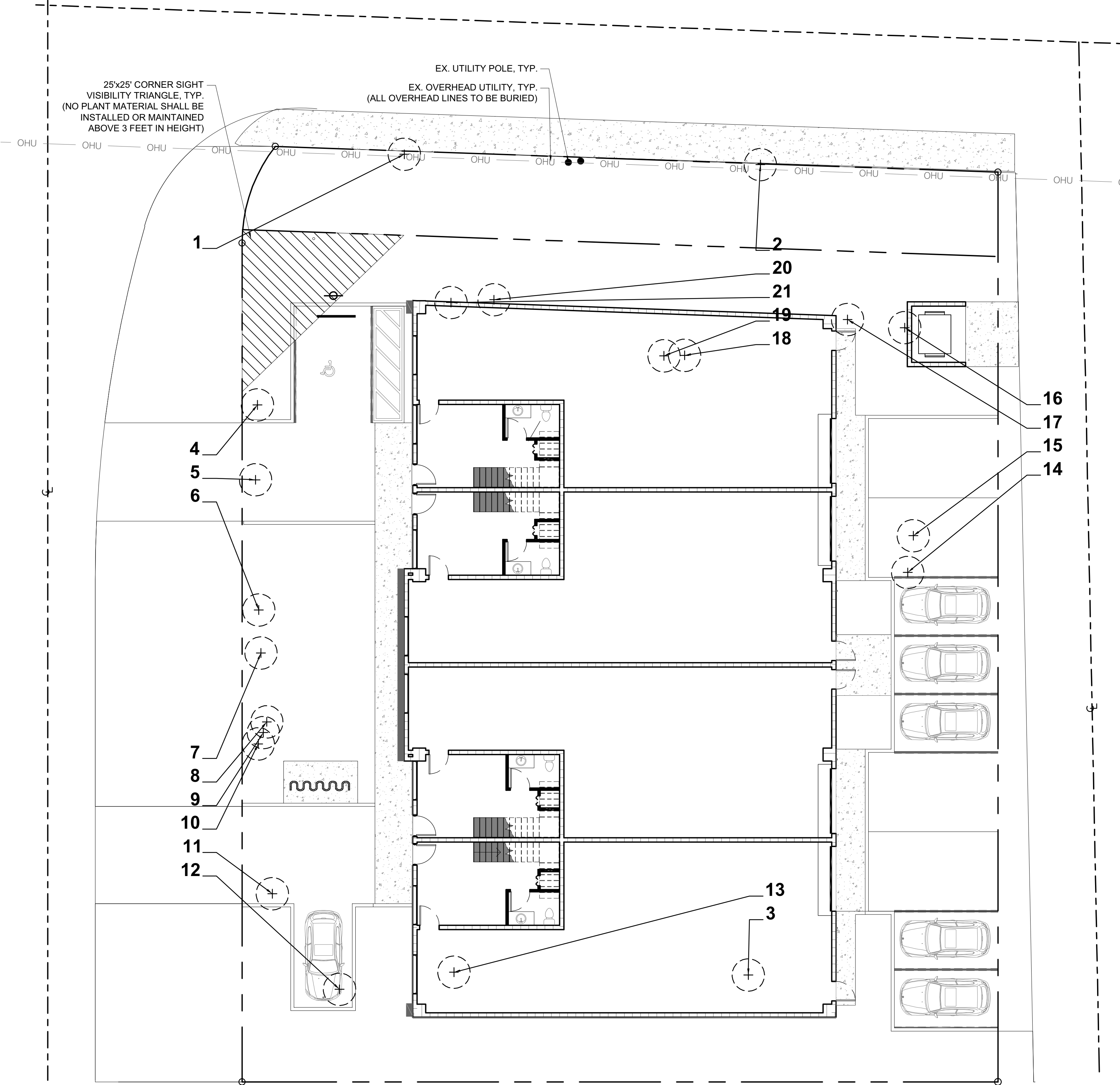
TREE #	COMMON NAME	BOTANICAL NAME	HEIGHT (ft)	WIDTH (ft)	DBH (in)	DISPOSITION
1	Unknown	Unknown	12	8	10	Remove
2	Unknown	Unknown	12	6	10	Remove
3	Unknown	Unknown	30	30	24	Remove
4	Sabal Palm	Sabal palmetto	20	10	16	Remove
5	Sabal Palm	Sabal palmetto	20	10	16	Remove
6	Sabal Palm	Sabal palmetto	12	14	12	Remove
7	Sabal Palm	Sabal palmetto	12	10	12	Remove
8	Sabal Palm	Sabal palmetto	12	10	12	Remove
9	Sabal Palm	Sabal palmetto	12	10	12	Remove
10	Sabal Palm	Sabal palmetto	12	10	10	Remove
11	Sabal Palm	Sabal palmetto	12	10	14	Remove
12	Sabal Palm	Sabal palmetto	12	10	14	Remove
13	Sabal Palm	Sabal palmetto	12	10	12	Remove
14	Sabal Palm	Sabal palmetto	14	12	14	Remove
15	Sabal Palm	Sabal palmetto	12	10	12	Remove
16	Sabal Palm	Sabal palmetto	20	10	12	Remove
17	Sabal Palm	Sabal palmetto	15	10	16	Remove
18	Sabal Palm	Sabal palmetto	15	10	16	Remove
19	Sabal Palm	Sabal palmetto	15	20	16	Remove
20	Sabal Palm	Sabal palmetto	15	20	16	Remove
21	Sabal Palm	Sabal palmetto	18	10	16	Remove

Mitigation Data:

Total DBH Removed:	292"
Total Replacement Caliper Provided:	0"
Deficit:*	292"
*Note: Remaining mitigation not provided on-site to be provided via payment to City Tree Fund as determined by staff. Total deficit not planted on-site: (292") DBH.	

Notes:

- Tree protection barricades must be installed and inspected by Urban Forestry Staff prior to any demolition work beginning on site.
- There will be no trenching within the dripline of existing trees for the installation of the erosion control fence.
- Demo permit will be for structure and hardscape only. Trees must remain on site and be protected during demolition. (Code Section: 155.2411, 155.5204)
- No tree/palm roots or parts shall be cut or damaged due to demolition or construction activities on site. If there are any tree/palm root conflicts, contact Urban Forestry Staff for assistance.
- If all or any existing structures on a lot are being totally demolished, drought resistant sod or drought-resistant ground cover shall be installed on the entire demolition and/or disturbed areas before close-out of the demolition Building Permit and thereafter maintained. All asphalt, rock, and other non-natural materials shall be removed and refilled to the undisturbed lot level with clean soil before any planting or installation of the required drought-resistant sod or ground cover.
- All exotic invasive plant material are to be removed from the site.



Project Team

Landscape Architect:

LANDSCAPE ARCHITECTURAL SERVICES, LLC

Brandon White | Owner
772-834-1357 | brandon@las-fl.com

Paul Goulas | Owner
772-631-8400 | paul@las-fl.com

1708 SE Joy Haven Street
Port St. Lucie, FL 34983

Architect / Applicant:

LLR Architects, Inc.
ARCHITECTURE & PLANNING
12980 S.W. 52 STREET
MIRAMAR, FLORIDA 33027

(OFF.) - 305-403-7926
(CELL) - 786-543-0851
E-MAIL: LLR@LLRARCHITECTS.COM

Proposed Warehouse

SW 3rd Street, Pompano Beach, FL 33069

Tree Disposition Plan

Revisions		
Date	Init.	Description
05.28.24	BW	Revised per Comments
11.18.24	DC	Revised per Site Plan

REGISTERED LANDSCAPE ARCHITECT

PAUL A. GOULAS

LA 6666807

STATE OF FLORIDA

PAUL GOULAS, RLA
FLORIDA REG. # LA6666807

Drawn By: DC

Checked By: PG

Municipal Project:

Scale:

NORTH

SCALE: 1" = 10'

0 5' 10' 20'

LS-02

DRC

PZ23-12000055

12/18/2024

Digitally signed by Paul A. Goulas

Date: 2024.11.18 10:59:55 -05'00'

Adobe Acrobat version: 2024.004.20272

811

Know what's below. Call before you dig.